



Search...

All Categories

Back to home page | Listed in category: Antiques > Asian Antiques > Japan > Netsuke

Bidding has ended on this item.

### Sponsored Links



256MB 280p 60ns 18c 8x16 ECC EDO...

**\$299.98**  
Free Shipping  
OEMPCWorld



Volume Lighting Edo 1-Light Polished...

**\$212.40**  
Free Shipping  
Home Depot



Volume Lighting Edo 1-Light Brushed...

**\$133.07**  
Free Shipping  
Home Depot



Volume Lighting Edo 1-Light Brushed...

**\$93.49**  
Free Shipping  
Home Depot

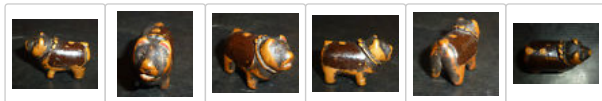


16MB EDO 100 pin SODIMM C4137A

**\$19.85**  
Free Shipping  
OEMPCWorld



Mouse over image to zoom



Have one to sell? [Sell now](#)

### Edo Netsuke of a Bear Wearing a Collar & Saddle Very Rare Subject C18TH

Item condition: --  
"No damage, wear commensurate with age, very rubbed."

Ended: Sep 07, 2016, 10:51AM

Winning bid: **GBP 83.00** [ 2 bids ]  
Approximately US \$109.50

**Seller information**  
qualityquirkyrare (504)

100% Positive feedback

Follow this seller

[See other items](#)

Shipping: **GBP 10.00 (approx. US \$13.19)** Royal Mail International Signed | [See details](#)  
See details about international shipping here.  
Item location: Leicester, United Kingdom  
Ships to: Worldwide [See exclusions](#)

Delivery: Estimated Delivery within 8-14 business days  
Seller ships within 3 days after receiving cleared payment.

Payments:

Credit Cards processed by PayPal  
[See details](#)

Returns: Seller does not offer returns. You are covered by the [eBay Money Back Guarantee](#) if you received an item that is not as described in the listing.

Guarantee: [See details](#)

Get the item you ordered or get your money back. Covers your purchase price and original shipping.

#### Description

#### Shipping and payments

Seller assumes all responsibility for this listing.

Last updated on Sep 01, 2016 08:38:44 PDT [View all revisions](#)

eBay item number:

#### Item specifics

Seller Notes: "No damage, wear commensurate with age, very rubbed."

Product: Netsuke  
 Age: Pre-1800  
 Region of Origin: Japanese

Original/Repro: Original  
 Primary Material: Wood/ Woodenware

Here we have an incredibly rare and old netsuke of a bear wearing a saddle and coll on all fours. Wonderful rich rubbed patina, with lots of wear. This netsuke has been used.

Dates from the early 18th century, circa 1710 - 1730.

Amazing fine item.

**measures approx 3.5cm**



**Questions and answers about this item**

No questions or answers have been posted about this item.

[Ask a question](#)

**Give your customers buying power**

75% of our cardholders say they always seek financing for major purchases.

[Learn More](#)

[Back to home page](#)

More to explore : [Rare Editions Polyester Girls' Formal Wear](#), [Pet Wear Dog Collars](#), [Pet Wear Adjustable Dog Collars](#), [Pet Wear Unisex Dog Collars](#), [Pet Wear Female Dog Collars](#), [Pet Wear Leather Dog Collars](#)

**NOON TO MIDNIGHT**  
 New Music / Food Trucks / Beer

**OCT 1 BUY TICKETS**

WALT DISNEY CONCERT HALL LA PHIL

**We help you drive repeat business**

68% of cardholders say they plan to use their card again.\*

[Get Started](#) [Learn more](#)

