



Japan Auction & Shopping

Enter a keyword or Auction ID

Search



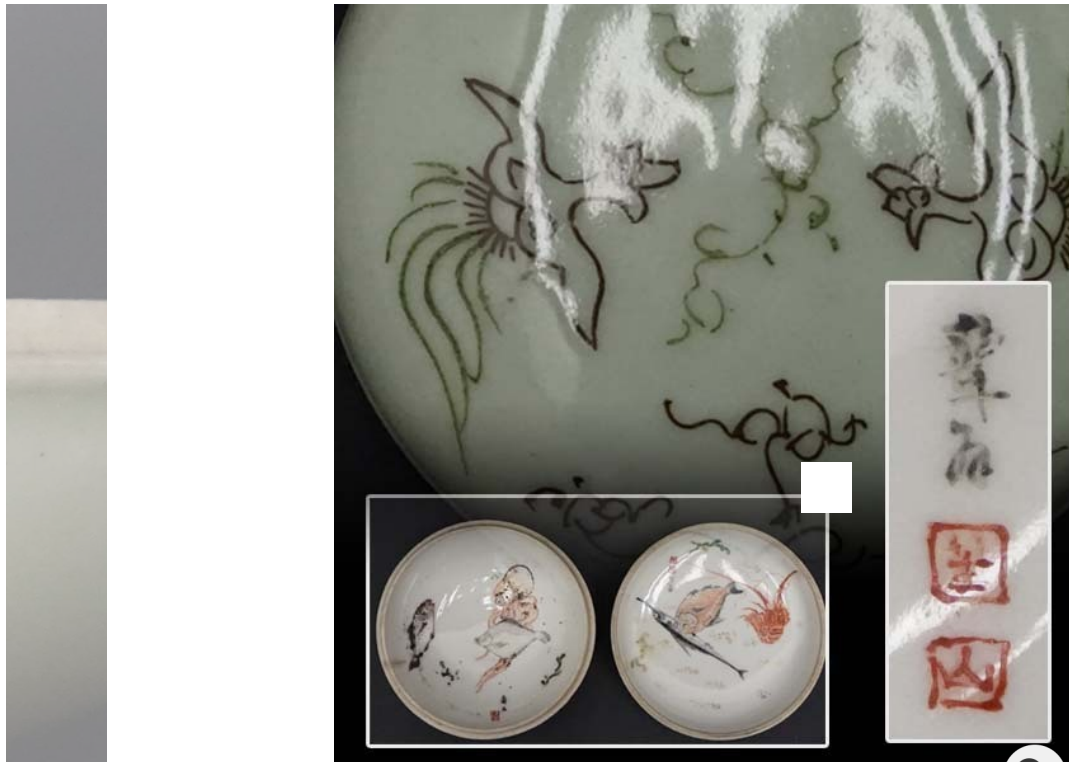
My Jauce

Yahoo! Japan Auctions Amazon Japan (beta) Rakuten Yahoo Shopping

Welcome Ryan!

Antiques & Collectibles > Crafts @ > Ceramics > Japanese Ceramics > Ceramics > Multicolored overglaze porcelain

色絵磁器 手描魚図紋香合 年代物 時代物 陶磁 陶器 陶芸品 在銘 工芸 年代物 時代物 唐物 時代 骨董 茶道具 香道具 古美術品



TIME LEFT: ended

CURRENT BID: 1 bid

1,000 yen

Shop tax (8%) will apply separate

This auction has ended.

SELLER INFORMATION

SELLER
chisatoselect

FEEDBACK
7193 ▲ 7217 ▼ 24

- > SEE OTHER ITEMS
- > ADD TO MY FAVORITE SELLER

ITEM LOCATION: Hiroshima Prefecture

ITEM CONDITION : Used
 AUCTION ID : h390438274
 QUANTITY : 1
 STARTING PRICE : 1,000 yen
 MAKE OFFER : No

JAPAN TIME [Convert your local time](#)
 CURRENT TIME : 2019/05/08 14:41:42
 STARTING TIME : 2019/4/11 17:4:00
 ENDING TIME : 2019/4/18 22:13:00
 TIME EXTENSION : Yes

ITEM DESCRIPTION

SHIPPING AND PAYMENTS

English ▼

This machine translation is meant for reference only. In case of any discrepancies, the Japanese text is always the final authority.

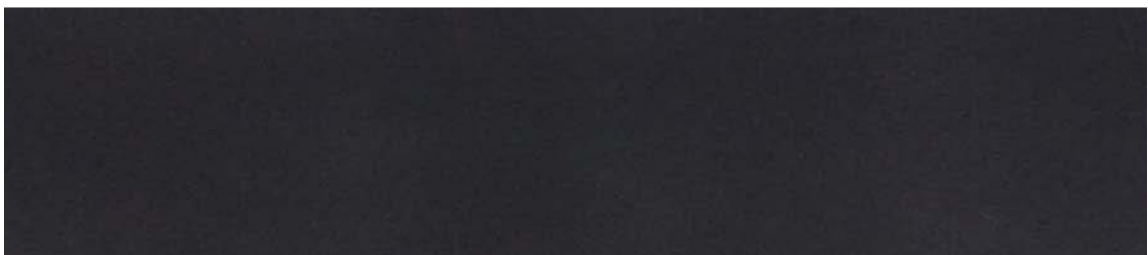
Description of item

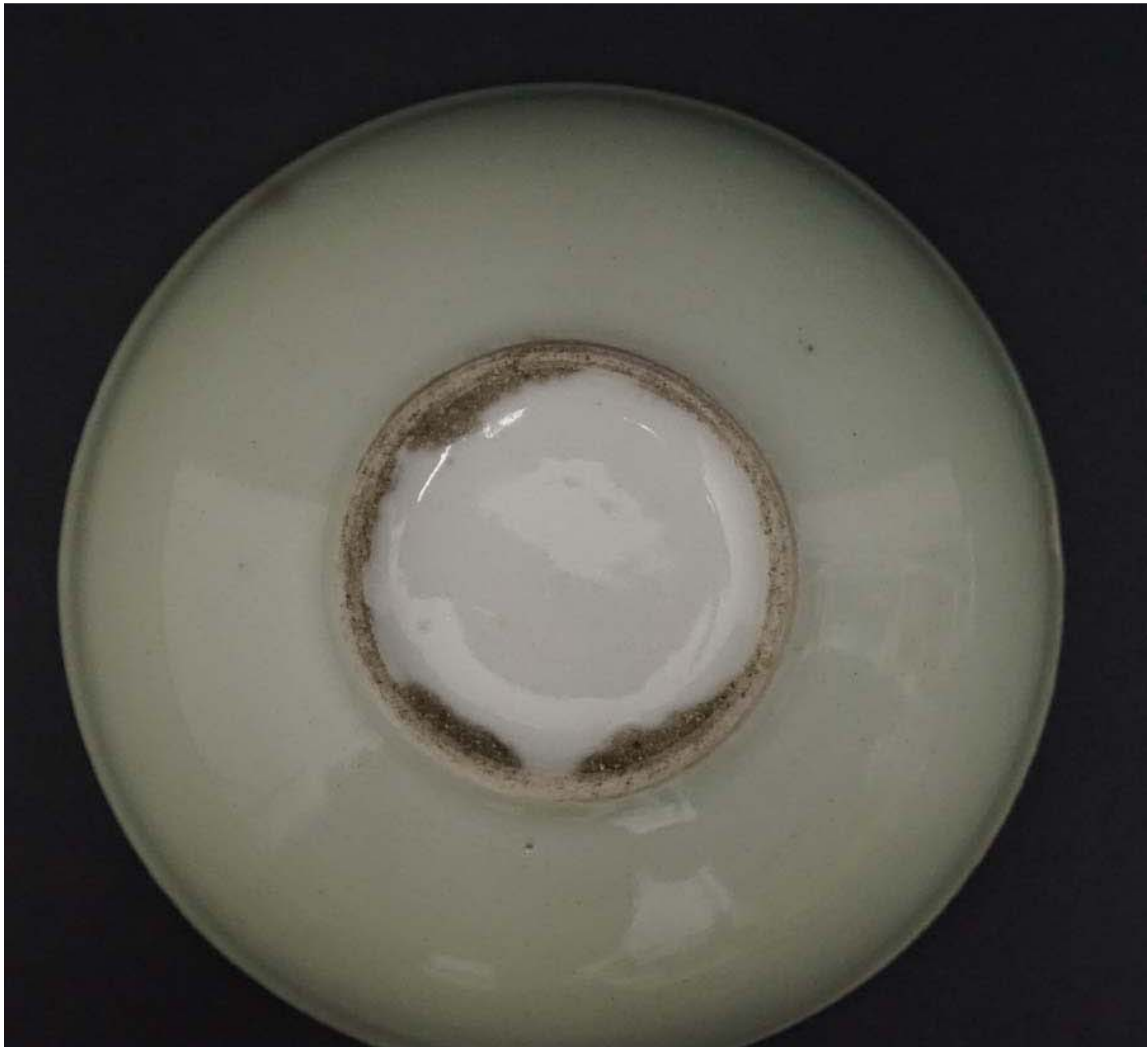
















Overglaze porcelain hand描魚view Mon Incense vintage ant
ique ceramic pottery ceramics crafts vintage antique Kara
mono era antique tea utensils incense tool antiquities

here of goods will be USED goods.

Due to aging, small scratches, and dirt

There is no box.
 State should be the image as a reference.
 Full of sense of the times, because it is Incense, who are looking for so as not to miss!
 Well Please confirm the image, following, description text, notes, on top of the shipping confirmation, fully understand, in assent, to give me a bid after conviction in your own judgment.
 Nikanshimashite antiquities, era because there such a difference of opinion, regional, guarantee of such history is not fr ee.
 If you have any questions, from the question column, please contact us.
 Last Since it becomes a USED article those looking for perfection, the more nervous one should refrain from a bid.

Size width of about 10 × depth of about 5 × height of about 7.5cm

[Details of dispatch]

dispatch from Hiroshima Prefecture

Yu-Pack 60 size

Those who care about the trifles, products of the state, and the like corresponding to our products better judge is severe, you are requested not to participate in the tender.

Even in 1000 yen start of goods, purchasing cost less, even if it is the case too cheaper than market price is folded is tender, so you may want to end the auction immediately prior to, on your note, auction participation, and your wishes.

Described statement, without reading the notes to the end, thank you so as not to bid also participated someone like put a wanton bad evaluation. If was wearing been et al unreasonable evaluation we will also here is the equivalent of the evaluation.

After a successful bid of goods, I correspond also taking over of the goods directly at the address below.
(Take-off response time, Monday to Friday, until 17 pm 11 am)

every day, so you have very for many of the e-mail or a connection bulletin board is us entered, from the successful bidder, if you overlook the mail, the report bulletin board there is. Even after a lapse of two days or more from us, when there is no nothing communication is, because there is a possibility of an oversight, but sorry to trouble you quickly respond if it is possible to TEL to us, can you because I need your help.

With regard to painting, true work guarantee in the item description, genuine assurance and work with a clearly stated, event, official appraiser, in the official appraiser, if it makes a determination that it is not true work-autograph returned goods, it responds to refund.
(However, the appraisal of the connoisseur of art gallery, etc. - a third party and personal I will covered by the warranty.)

With regard to appraisal fees and other expenses related to expert opinion, it will bear the highest bidder yourself, please understand.

Any questions, want to hear the details situation, immediately in the TEL if something, I will answer.

TEL 082-562-2800

[repair by the insurance application response and will transport company from shipping company also properly..](#)
[we need your help it will be or refund.](#)

[Payment method details]

simple settlement
 bank transfer
 Japan Net Bank
 Rakuten bank
 Japan Post Bank
 Hiroshima Bank

【ゆうパック送料表】

サイズ	北海道	青森 岩手 宮城 秋田 山形 福島	茨城 栃木 群馬 埼玉 千葉 東京 神奈川 山梨 新潟 長野	富山 石川 福井 静岡 愛知 岐阜 三重	奈良 滋賀 京都 大阪 兵庫 和歌山 岡山 鳥取 島根 広島 山口 徳島 香川 愛媛 高知 福岡 佐賀 長崎 熊本 大分 宮崎 鹿児島	沖縄
60サイズ	¥1,510	¥1,280	¥1,080	¥950	¥850	¥1,210
80サイズ	¥1,720	¥1,500	¥1,290	¥1,180	¥1,080	¥1,480
100サイズ	¥1,960	¥1,730	¥1,530	¥1,410	¥1,310	¥1,740
120サイズ	¥2,200	¥1,980	¥1,770	¥1,660	¥1,560	¥2,010
140サイズ	¥2,450	¥2,220	¥2,020	¥1,910	¥1,800	¥2,270
160サイズ	¥2,670	¥2,440	¥2,230	¥2,120	¥2,020	¥2,490
170サイズ	¥3,040	¥2,800	¥2,590	¥2,480	¥2,370	¥2,860

[Yamato Easy household goods carriage table]

[For more information Please check here](#)

[Notes]

Recently, a novel, beginners, evaluation is bad, but many people mischief of There are many.
 Exhibition, please do not bid at all towards the people and the attached claims, such as there is no a ccessory after the end because the image is all.
 Read the notes ask you for a bid in.

The furniture and the large ones will be shipped in Yamato Easy household goods, it will be to expen sive shipping Unlike courier, so we attach a link before a bid, I ask you for a check before bidding alw ays shipping .

In addition, Yamato Easy household goods is year-end and New Year holidays, moving season, the ot her busy season, because by the arrival planned site might take up to two weeks to arrive from the collection, people such as hasten the dispatch thank you so as not to bid .

Because our side is the store, separately to the highest bid, consumption tax (8%) will take.
 Our shop will contact you always by e-mail.

After the end of the auction, so you automatically order form is sent, on top of the carriage, such as confirmation well, thank you for your reply received your entry. It should be noted that, if you can no t confirm the order form, this time slot, please contact us by e-mail to our shop.

We will contact you such as e-mail is not delivered, but our shop will send an email to your register

there is trouble, I hope that effect you can let me know. If you are registered in the mobile phone address, we ask you to confirm the settings so that always can be received by e-mail from the PC.

The more nervous one, those who dirty anxious, bid because it becomes a source of trouble, please refrain.

Only those who take contact us within 48 hours after the end of an auction, please be bid.

If there is no connection within 48 hours, by the highest bidder convenience, we will delete.

The color that I thought so at the personal computer of the image can not tell clearly, state and different, the claim is more anxious because it does not accept, such as to refrain from a bid.

After it makes a successful bid for the dispatch method other than those described, but some people come to demand, the dispatch method for the business simplification other than those described, please understand that it does not accept.

The worse one of evaluation, the newer one, please understand that it may cancel a bid by our judgment.

We evaluated only to those who evaluated in regard to evaluation. Evaluation is to us the direction of needlessness thank you so as not to be evaluated in absolute.

Accessories thank you from the question column If you have any because it becomes all the image.

Recently, there is a bid of those who do not common sense. Discount after a successful bid, change of the dispatch method, selfish returned goods such as any, because it does not accept, the case of a bid should be bid from understood.

For such as electrical appliances, in the case of initial failure, I will correspond if it is within seven days after goods arrival. (Please give me a better confirmation of quick action after the arrival to the product)

brand-name products, watch, for the prevention swap for the precious metal, returned goods are not accepted.

Rapid response to, but you try, for the business busy, Yu-Pack, after dispatch payment check in Sagawa Express 2, 3 days, about one week evaluation from here folded, those who hurry dispatch because use there is such a case, Please refrain from a bid impatient person. If there is no common sense, please refrain from the bid, such as putting a suddenly bad evaluation.

Saturdays, Sundays and public holidays, please note that it can not ship.

Brand-name goods is because it becomes a real appraisal already questions such as "Is the real thing?" Does not answer. Although not impossible, in the case of any chance imitation, appraisal has been store name, full name, Let us know the address, after delivery, it responds to returned goods only within one week.

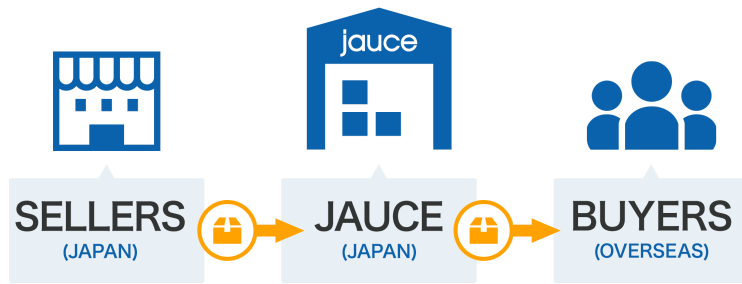
Specified Commercial Transactions Law by the display

Co., Ltd. Selesa
, Aki-gun, Hiroshima Kumano-cho, Dekiniwa 7-23-7

Tel 082-562-2800

Hiroshima Prefectural Public Safety Commission No. 731071900008 No.

Seller will ship the item to JAUCE warehouses and JAUCE will ship to the buyer internationally.



[See more de](#)

INTERNATIONAL DELIVERY FEE ESTIMATION

Destination:

Estimated weight: gram

[Get "Estimated" Rates](#)

SERVICE FEE ESTIMATION

Estimated closing price: JPY

[SUBMIT](#)

[See more de](#)

Japan: 08 May, 14:43

[Delivery fee estimator](#)

[Service fee estimator](#)

- [News](#)
- [Privacy policy](#)
- [Disclaimer](#)
- [User Agreement](#)
- [Sitemap.XML](#)

- [Blog](#)
- [eBay Japan](#)
- [Enchère Japon](#)
- [аукционах Японии](#)
- [日本拍賣](#)

- [What we do](#)
- [How to use](#)
- [Auctions](#)
- [Shopping](#)

- [Storage](#)
- [International Delivery](#)
- [Restrictions](#)

